

89 Orchard Brae Avenue,
Edinburgh,
Midlothian, EH4 2UR

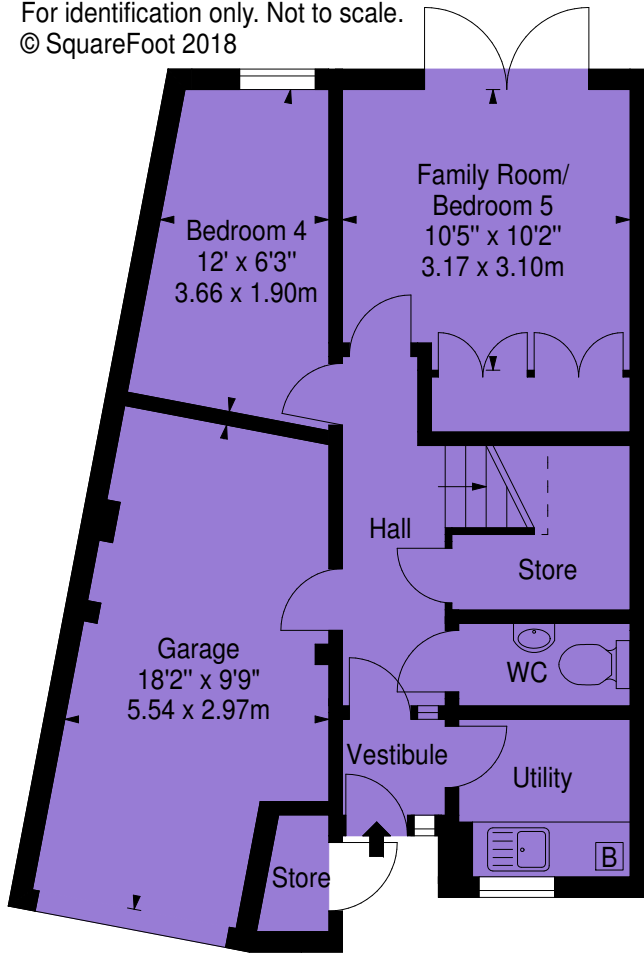
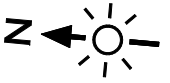


Approx. Gross Internal Area
1516 Sq Ft - 140.84 Sq M

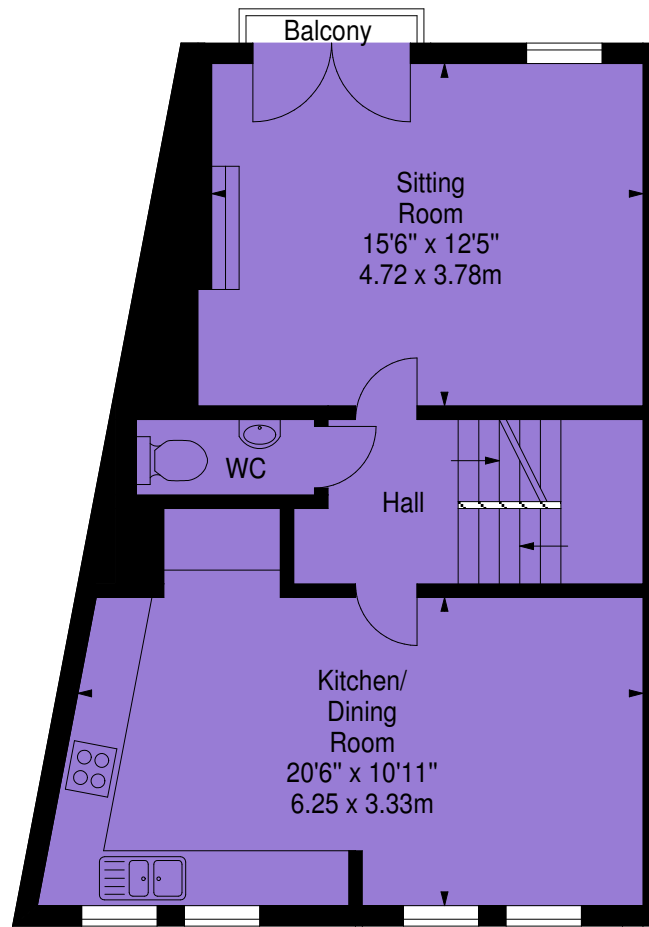
Garage & Store

Approx. Gross Internal Area
167 Sq Ft - 15.51 Sq M

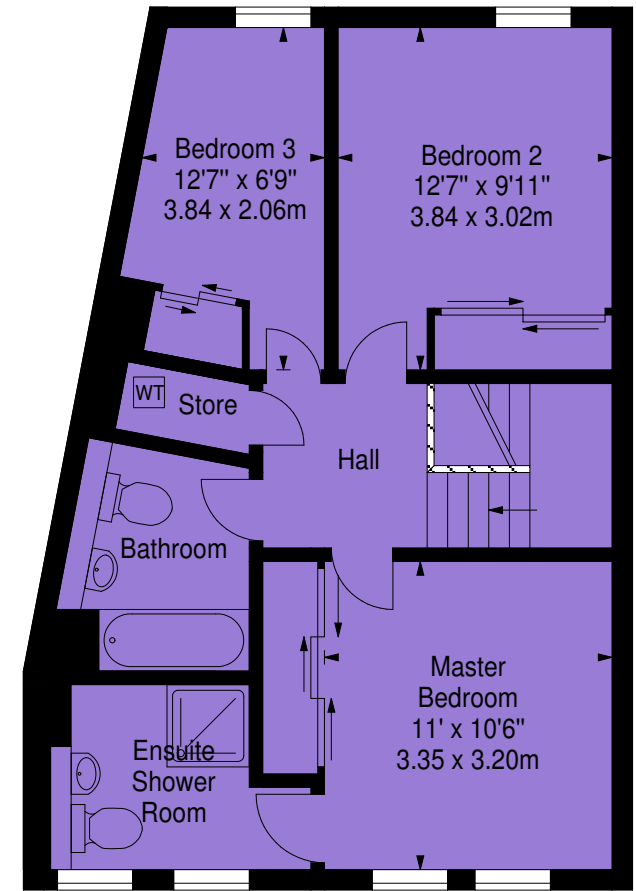
For identification only. Not to scale.
© SquareFoot 2018



Ground Floor



First Floor



Second Floor